

**PRODUCT DIMENSIONS AND SPECIFICATIONS**

<b>PUBLISHING SPEED</b> (Burn and Print)	
CD:	30 discs/hour, Epson specified CD-R 600 MB data volume, writing speed: Drive max speed: 40 x
DVD:	15 discs/hour, Epson specified DVD-R 3.8 GB data volume, writing speed: Drive max speed 12 x
<b>PUBLISHING MODES</b> (number of copies)	
External output:	1 – 5, 2 stackers & pick-up tray used
Standard mode:	1 – 50, 2 stackers used (autom.)
Batch mode:	1 – 100, 3 stackers used
<b>PRINT SPECIFICATIONS</b>	
Print speed:	45 discs/hour, bidirectional, (Fast mode) 30 discs/hour, bidirectional, (Fine mode)
Print head:	Black ink 180 nozzles, Colour ink 180 nozzles x 5 colours
Print direction:	Bidirectional or uni-directional
Print resolution:	High-speed 1440 dpi x 720 dpi (Fast mode), High-resolution 1440 dpi x 1440 dpi (Fine mode)
<b>INK CARTRIDGE</b>	
Ink type:	Dye ink
Colours:	Cyan, Magenta, Yellow, Light Cyan, Light Magenta, Black
Capacity:	1000 discs or more (Ø 45 – 116 mm, 16,7 % colour sharing, continuous printing, mode setting: Fine)
<b>PRINT AREA</b>	
Standard setting for outside diameter:	Ø 116 mm
Outside diameter setting range:	Ø 70 – 119.4 mm
Standard setting for inside diameter:	Ø 45 mm
Inside diameter setting range:	Ø 18 – 50 mm
Guaranteed print area:	Ø 45 – 116 mm
<b>CD/DVD DRIVES</b>	
CD/DVD drives:	2 drives
Writing speed: CD:	Maximum 40 x
	DVD-R, DVD+R: Maximum 12 x
	DVD-R DL, DVD+R DL: Maximum 8 x
<b>SUPPORTED MEDIA</b>	
Size: Outside diameter:	Ø 120 mm ± 0.3 mm
Inside diameter:	Ø 15 mm + 0.1/-0 mm
Thickness:	1.2 mm + 0.3/-0.1 mm
Form:	Supports common 12 cm (4.7 inch) discs. Does not support specially-shaped discs
Type:	CD-R, DVD-R, DVD+R, DVD-R DL, DVD+R DL
Surface:	Printable (high quality or glossy). For glossy discs, only supports Epson-recommended products.
<b>EXTERNAL DIMENSIONS</b>	
Width 377 mm, Depth 465 mm, Height 348 mm (Excluding the AC cable and USB cable)	
<b>MASS</b>	
Approximately 24 Kg (52.9 lb), including the stackers and ink cartridge, excluding the AC cable and discs	
<b>SOFTWARE</b>	
Total Disc Maker:	Installed to the user's PC to publish discs
Total Disc Monitor:	Displays the status of jobs and devices
Total Disc Setup:	Installed to user's PC to make settings of PP-100
TD Bridge System incorporation tool to use the with other companies' application Adjustment Tool for PP-100	
<b>REQUIRED IT-ENVIRONMENT</b>	
OS:	Windows XP SP2 or later, Home/Professional, Windows 2000 SP4 or later, Professional, Windows Vista Home, Home Premium, Business, Professional SP1.
CPU:	Pentium 4, 1.4 GHz or higher, Memory: 512 Mbytes or larger
HDD:	10 Gbytes or larger, 7200 rpm or more
Graphics environment:	XGA or more, 65536 colors or more
Sound environment:	A sound device and a supported driver must be installed for music media
USB 2.0 (High-speed)	
USB port:	This product cannot be used in USB port of the PC equipped with some ATI's chipset as follows: ATI's Southbridge IXP (SB)460 or earlier Individual published performance results may vary depending on processing capacity of PC
<b>INTERFACE</b>	
Universal Serial Bus Specifications Revision 2.0, Transmission speed: 480 Mbps (High-speed Device)	
<b>ELECTRICAL</b>	
Rated voltage: AC 100 V to AC 240, Frequency: 50 Hz to 60 Hz	
<b>STANDARDS</b>	
CE Marking:	EMC Directive 2004/108/EC, EN55022 Class B, EN61000-3-2, EN6000-3-3, EN55024 Low Voltage Directive 2006/95/EC, EN60950-1 (TÜV)
<b>WARRANTY</b>	
1 year on-site including drives, with optional cover plus for 3 years on-site	

**EPSON®**



**EPSON DISCPRODUCER™ PP-100**

**STAND OUT FROM THE CROWD**



For more information please contact

Tel: 0871 222 6702 (UK)  
01 436 7742 (Republic of Ireland)

Web: www.epson.co.uk  
www.epson.ie

E-mail: enquiries@epson.co.uk  
Chat: etalk.epson-europe.com  
Fax: 0871 222 6740

Trademarks and registered trademarks are the property of Seiko Epson Corporation or their respective owners. Product information is subject to change without prior notice.

**EPSON®**

**EPSON®**  
EXCEED YOUR VISION

# EXPERTS IN PRINTING AND ROBOTICS

You know the situation. You just want to burn and print a handful of CDs/DVDs – and suddenly, half your day's gone. It doesn't have to be like this. The fully automatic Epson Discproducer™ can do it for you at the touch of a button, leaving you free to focus on other tasks. Whether you need just one disc, or one hundred, you'll find it delivers reliable data burning and photo-realistic printing – quickly, efficiently and very cost-effectively.

## Ideal for a wide range of applications

### Duplication service

The Discproducer™ is your perfect tool for maximising margins in the rapidly growing media production market. Whether you want to use it for an individual disc or a batch job, its high reliability, superb print quality and cost-effectiveness make it the ideal system for service providers.

### Clinics and practices

Supply a better service to your patients through the use of digital data in areas such as radiology, cardiology, ultrasound and CT imaging. The Discproducer™ burns data and images quickly, and helps cut costs when switching from analogue X-ray or CT film to digital imaging.

### Corporations

Reduce your labour overheads by removing the need to manually burn and label discs in marketing, sales, product development and customer service departments. Automating the procedure using the Epson Discproducer™ saves considerable time and money, whilst ensuring that your confidential data stays in-house.

### Advertising and photo agencies

The CD/DVD medium plays a dual role. Not only is it an efficient way of delivering digital content to your customers – you can use creative labelling as a powerful promotional tool. The Discproducer™ uses 6-colour Micro Piezo™ inkjet printing to give you the opportunity to showcase your design skills through high-impact labelling.

### The Public Sector

By automating the burning/printing process, the Epson Discproducer™ offers your organisation a valuable way of reducing costs, streamlining processes and enhancing quality and efficiency.



We are the only manufacturer in the world to design and develop both precision robotics and advanced printing solutions. This means we have the expertise in these areas to set new standards in professional disc publishing. The Epson Discproducer™ delivers the highest printing quality in its class – plus the excellence and reliability for which we are known.

The Epson Discproducer™ is a standalone model. A network-compatible version with additional security functions will become available in spring/summer 2009.



### Schools and universities

If you work in education, you'll know that multimedia content has become increasingly important – and that the need for fast and cost-effective CD/DVD duplication is growing. With the ability to duplicate up to 30 CDs per hour and more than 10,000 per year, the Discproducer™ is ideally suited to meet the demands of the educational sector.

### Software and IT companies

When you regularly need to produce customer-specific batches of CD/DVDs, the Discproducer™ is an essential piece of kit. Whatever you're creating – software updates, service packs, multimedia product presentations or data archiving – the Discproducer™ will speed up production and help reduce your labour and process costs.

### Pre-press services

The Discproducer™ is invaluable for quickly and conveniently burning work onto visual storage media for your clients. You can even exhibit your company's creative standards using the printed disc graphic, thanks to the outstanding photo-quality performance of the 6-colour Micro Piezo™ inkjet printer.

### Multiple data types

Working with the Discproducer™ is as easy as working with an ordinary office printer. Whatever volume of data you need to burn – and whatever type, from music and photos to videos and multimedia presentations – you'll find perfect results at your fingertips.

# EPSON DISCPRODUCER™ PP-100 AT A GLANCE:

## Real reliability

- Solid, durable, dust-proof body
- Long lifespan with superb reliability
- Intuitive operation

## Impressive print quality

- Best print quality in its class
- 6-colour Micro Piezo™ technology for vibrant prints
- Water-resistant prints using WaterShield™ media (media from other manufacturers also supported)

## True cost-effectiveness

- Individual inks – only replace the colour used
- Patented AcuGrip™ robotics ensures precision handling of discs and eliminates the possibility of damage
- 1,000 prints per set of ink cartridges

## Total convenience

- As easy to use as an ordinary office printer
- Only system in its class that offers the advantage of operation and status reporting from the front

## High capacity

- Duplicate up to 100 CDs/DVDs in a single cycle
- Produce up to 30 units per hour

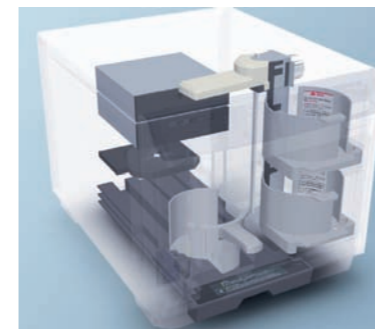
## Trusted brand

- Epson is known for quality and innovation, plus support that's second to none



- 1 Ink level Status LED
- 2 Six separate ink cartridges
- 3 Three media trays for runs of up to 100
- 4 Robotic arm

The Epson Discproducer™ is the only product of its type that shows ink status for each individual colour using LED.



Three trays of 50 discs each allow fully automatic production runs up to 100.



An additional drawer allows the removal of individual discs. This makes problems due to unreadable discs easy to resolve.



PP-100 systems can be stacked to save valuable space



## AcuGrip™

When you know that we also design and manufacture precision robots used in a wide range of demanding applications, you understand why our reputation for reliability is unsurpassed in the industry.

## The Epson quality hallmark

We are a world leader in the design, development and manufacture of robots for medical technology and airbag testing. That's why you'll find our products so reliable – they're built on the platform of knowledge and experience gained in robotics environments. Our Discproducer™ is a perfect example, with its compact design, dust-proof body and minimum of moving parts delivering precision performance and excellent reliability.

## Individual or batch production

If you need to burn and print an individual disc, no problem – you can have it at the touch of a button. And if you want to print batches? Again, it's simple – the Epson Discproducer™ has three trays for 50 discs, allowing up to 100 discs to be produced in one work cycle. It also has an additional drawer for up to five discs, so individual CD/DVD blanks can be conveniently removed without opening the housing.

## Compact, all-in-one design

Our Discproducer™ is one of the smallest available, with a housing that's less than 40cm wide. It's the only system in its class that offers you the ease of complete operation from the front. If you need to save space, its flat construction means you can stack two systems, and even use the top as a storage surface – ideal for media and print cartridges.

## Patented AcuGrip™ robotic arm

Specially developed for our Discproducer™, The AcuGrip™ mechanism ensures that the robotic arm reliably grabs only one CD/DVD blank – even if they're stuck together. This increases the life of the product, and helps protect against unsupervised production runs being interrupted by mechanical blockage.



If you're looking for reliable, high-performance inkjet printing for your CDs/DVDs, plus a low cost of ownership - you've found it.

**Easy ink monitoring**

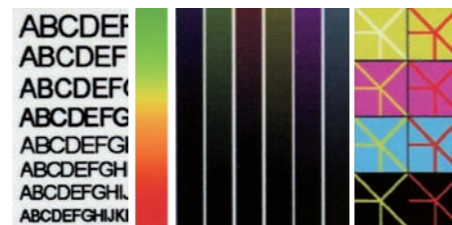
It's quick and easy to find out your ink level status for each individual colour with the Discproducer's™ unique LED system. This useful feature allows you to manually or automatically interrupt the printing process in the case of a near-empty cartridge. You can then avoid a situation where the system is printing without ink, which can cause damage and waste.



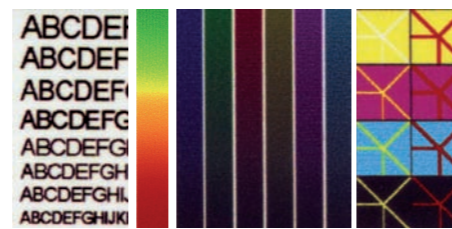
The ink cartridge for each colour can be easily changed in just a few seconds

**Micro Piezo™ printing with six colours**

You'll find many advanced features which make our Discproducer™ unique – and one of these is its patented Micro Piezo™ ink system. It uses six colours instead of the usual four to offer you outstanding photo-realistic image quality. Our unique Micro Piezo™ print head technology delivers ultra-fine colour gradation plus razor-sharp text – even in small font sizes.



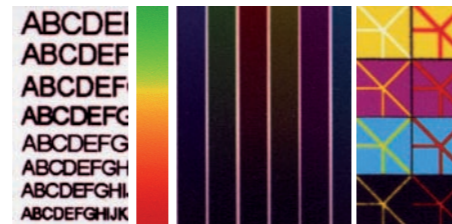
Epson Discproducer™ PP-100: Photo realistic colour gradients, smudge-proof, water-resistant, no ink bleed, razor-sharp text – even in 4 point!



Competitor A: irregular and impure colour gradients, ink bleed

**Cost-effective and reliable**

With the capacity to produce over 1,000 discs from each set of cartridges, depending on the print image, the Epson Discproducer™ delivers an attractively low cost per unit. What's more, you have total flexibility in your choice of consumables – you can choose whether you use the specified consumables (Epson ink + WaterShield™ media), or buy your cartridges and media individually.

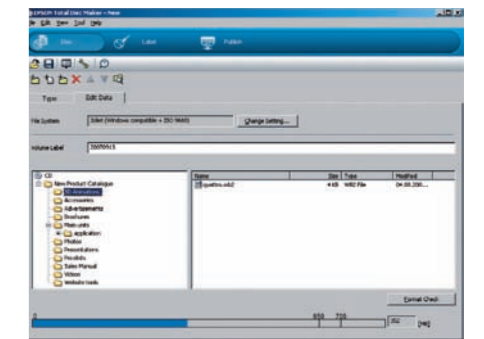


Competitor B: irregular and impure colour gradients, striation, unclear text

**Working with the Epson Discproducer™ is as easy as working with an ordinary office printer. Simply compile your data, compose an image, configure the run, click “OK” – and it's done. You're free to get on with other things.**

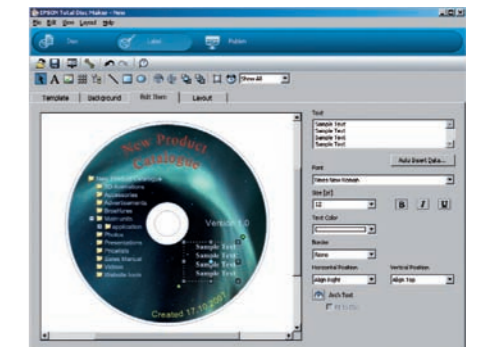
**Step 1: Compile data**

The Discproducer's™ software (Disc Editing view) works like standard programs for burning data on digital storage media. After indicating whether you're burning music, videos or data to the disc, you simply load the data and save it to an easily-created folder. It's quick and straightforward, so you don't need to be an expert – it can be done by novices and technophobes.



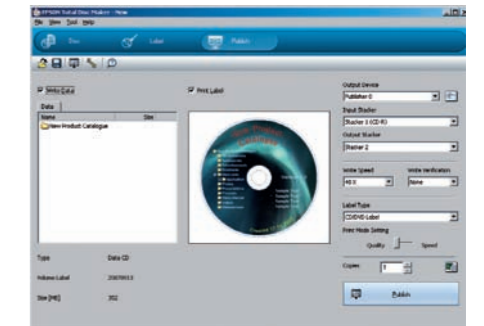
**Step 2: Composing the print image**

Composing your own CD/DVD image is easy using the Discproducer's™ software (Label Editing view). You can either let your creativity run wild, or use one of the many pre-defined templates and images provided. The preview display lets you check your composition, and – when you're happy – you can save your work for easy retrieval in the future.



**Step 3: Configuring production**

These are the last few simple steps before you press 'go'. The Discproducer's™ software leads you through the process, helping you to set parameters such as the number of CDs or DVDs to be burned, the burning and print speed, the in/out trays for discs, and print resolution. Then simply press “Publish” – and your production run is on its way.



**Monitoring system reliability**

The Discproducer's™ Monitoring Software keeps you informed about all important parameters, such as tray status and pending jobs. This helps you choose whether to let your production run continue unattended, and protects you against any unexpected interruptions – especially useful when you're working against a tight deadline.

